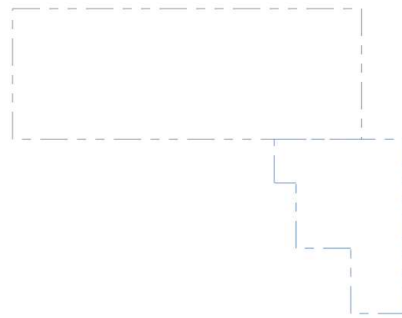
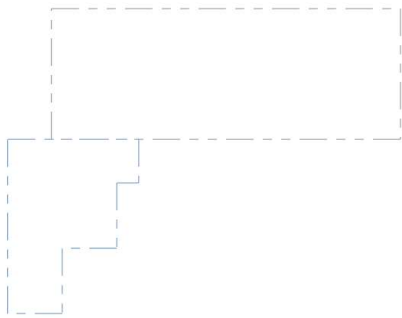
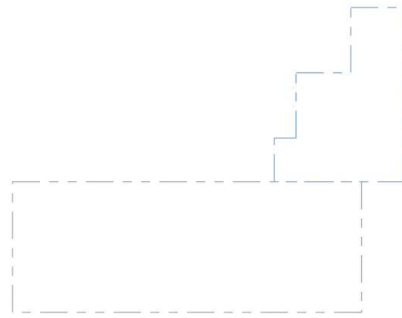
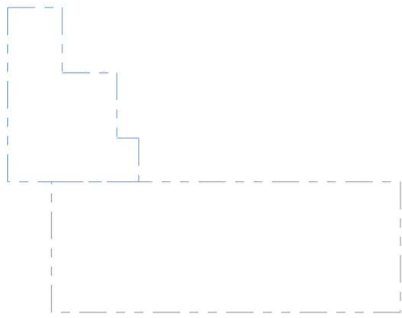


CHUCK / STOCK



CHUCK (LEFT):	YES
GRIP LENGTH:	0.0
HEIGHT:	2.0
WIDTH:	1.5
THICKNESS:	0.625
REFERENCE:	X-3.0, Z2.0
HSTEP:	0.25
VSTEP:	0.5

CHUCK (RIGHT):	YES
GRIP LENGTH:	0.0
HEIGHT:	2.0
WIDTH:	1.5
THICKNESS:	0.625
REFERENCE:	X7.0, Z2.0
HSTEP:	0.25
VSTEP:	0.5

STOCK (LEFT):	YES
OUTSIDE DIAMETER:	4.0
INSIDE DIAMETER:	1.0
LENGTH:	4.0
Z REFERENCE:	0.0

STOCK (RIGHT):	YES
OUTSIDE DIAMETER:	4.0
INSIDE DIAMETER:	1.0
LENGTH:	4.0
Z REFERENCE:	4.0

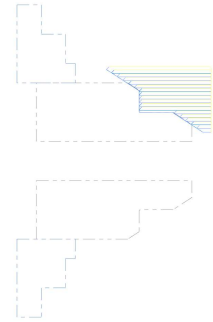
CYCLE TIME: 0 HOURS, 23 MINUTES, 21 SECONDS

OPERATION LIST

OPERATION INFO 1 - Lathe Rough

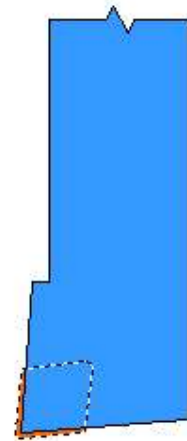
CYCLE TIME: 0 HOURS, 13 MINUTES, 40 SECONDS
COMMENT:

SPINDLE SPEED: 200 CSS
FAST FEED: 0.01 inch/rev
SLOW FEED: 0.005 inch/rev
STOCK TO LEAVE (X): 0.01
STOCK TO LEAVE (Z): 0.01
RETRACT ACTIVE: NO
ENTRY ACTIVE: NO
COOLANT: Flood



TOOL INFO T0101: General Turning Tool - OD ROUGH RIGHT - 80 DEG.

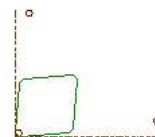
TOP TURRET: YES
ACTIVE SPINDLE: Left
SPINDLE DIRECTION: CCW
SPINDLE SPEED: 200 CSS
FAST FEED: 0.01 inch/rev
SLOW FEED: 0.005 inch/rev
OFFSET: 1
OFFSET (BACK): NA
INSERT UP: NO
COOLANT: Flood
TIME: 00:13:40



HOLDER: DCGNR-164D
LENGTH: 6.0
WIDTH: 1.25
ORIENTATION: Vertical ANGLE: 0.0
HAND: Right



INSERT: CNMG-432
SHAPE: C (80 deg. diamond)
RADIUS: 0.0313
MATERIAL: Carbide

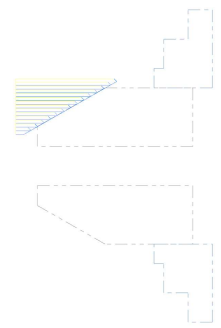


OPERATION INFO

2 - Lathe Rough

CYCLE TIME:	0 HOURS, 9 MINUTES, 41 SECONDS
COMMENT:	

SPINDLE SPEED:	200 CSS
FAST FEED:	0.01 inch/rev
SLOW FEED:	0.005 inch/rev
STOCK TO LEAVE (X):	0.01
STOCK TO LEAVE (Z):	0.01
RETRACT ACTIVE:	NO
ENTRY ACTIVE:	NO
COOLANT:	Off



TOOL INFO

T0202: General Turning Tool - OD FINISH RIGHT - 35 DEG.

TOP TURRET:	YES
ACTIVE SPINDLE:	Right
SPINDLE DIRECTION:	CCW
SPINDLE SPEED:	200 CSS
FAST FEED:	0.01 inch/rev
SLOW FEED:	0.005 inch/rev
OFFSET:	2
OFFSET (BACK):	NA
INSERT UP:	YES
COOLANT:	Off
TIME:	00:09:41



HOLDER:	MVJNR-164D	
LENGTH:	6.0	
WIDTH:	1.25	
ORIENTATION:	Vertical	ANGLE: 0.0
HAND:	Right	



INSERT:	VNMG-431
SHAPE:	V (35 deg. diamond)
RADIUS:	0.0156
MATERIAL:	Carbide



TOOL LIST

Sorted: NO

TOOL INFO

T0101: General Turning Tool - OD ROUGH RIGHT - 80 DEG.

TOP TURRET:	YES
ACTIVE SPINDLE:	Left
SPINDLE DIRECTION:	CCW
SPINDLE SPEED:	200 CSS
FAST FEED:	0.01 inch/rev
SLOW FEED:	0.005 inch/rev
OFFSET:	1
OFFSET (BACK):	NA
INSERT UP:	NO
COOLANT:	Flood
TIME:	00:13:40

HOLDER:	DCG NR-164D
LENGTH:	6.0
WIDTH:	1.25
ORIENTATION:	Vertical ANGLE: 0.0
HAND:	Right

INSERT:	CNMG-432
SHAPE:	C (80 deg. diamond)
RADIUS:	0.0313
MATERIAL:	Carbide



USED BY OPERATION:	# 1 1 - Lathe Rough
--------------------	--------------------------

TOOL INFO

T0202: General Turning Tool - OD FINISH RIGHT - 35 DEG.

TOP TURRET:	YES
ACTIVE SPINDLE:	Right
SPINDLE DIRECTION:	CCW
SPINDLE SPEED:	200 CSS
FAST FEED:	0.01 inch/rev
SLOW FEED:	0.005 inch/rev
OFFSET:	2
OFFSET (BACK):	NA
INSERT UP:	YES
COOLANT:	Off
TIME:	00:09:41

HOLDER:	MVJNR-164D	
LENGTH:	6.0	
WIDTH:	1.25	
ORIENTATION:	Vertical	ANGLE: 0.0
HAND:	Right	

INSERT:	VNMG-431
SHAPE:	V (35 deg. diamond)
RADIUS:	0.0156
MATERIAL:	Carbide



USED BY OPERATION:	# 2	2 - Lathe Rough
--------------------	-----	-----------------

WORK OFFSETS

OFFSET INFO

NUMBER: -1	PLANE:	ORIGIN: X0.0, Z0.0
USED BY OPERATION:	# 1	1 - Lathe Rough
USED BY OPERATION:	# 2	2 - Lathe Rough